

About Cambodia



Kingdom of Cambodia
Ministry of Foreign Affairs
and International Cooperation

• Land Area & Location • Statistics • Labor Force • Living in Cambodia

Land & Location



Capital City:
Phnom Penh

25 Cities and Provinces

Labor Force (2018)

Employed \approx **99.3%**
Unemployed \approx **0.7%**

of \approx
10 Million
People

Statistics (2019)

1 **15.29**
Million (Q1 2019)
Annual Population **Growth Rate** **1.46%**

*These figures exclude migrants working abroad.
Total of migrants working abroad: 1.23 Million

- Thailand 1.1 M
- Japan 9.1K
- Hong Kong 54
- ROK 49.0K
- Singapore 831
- Saudi Arabia 16
- Malaysia 30.1K

2 **Median Age** **26.2**

3 **Gender Ratio**
7.42 Million (48.5%) **7.87** Million (51.5%)

4 **Life Expectancy** **68.67** **65.56**

Living in Cambodia

2 **Seasons**

Rainy Season
May-October

Dry Season
November-April



Local Currency
 Riel (KHR)

Religion
90% - Buddhism
10% - Others

Language
Khmer

GDP
per capita

2018
\$1,548

2019
\$1,679

2020
\$1,821
(pre.)

1993 **2015** **2030** **2050**

Low Income Country | Lower Middle Income Country | Upper Middle Income Country

"The 6th fastest growing economy in the world with an average growth rate of 7.7% between 1995 and 2018"



1998

Int'l Tourism Contribution to GDP **166** million (USD) **9,7%**

Tourism Employment **80** thousand

2008

Int'l Tourism Contribution to GDP **1,595** million (USD) **12,5%**

Tourism Employment **300** thousand

2018

Int'l Tourism Contribution to GDP **4,375** million (USD) **12,7%**

Tourism Employment **620** thousand

Growth **12,7%**

Growth **675%**

Tourism Statistics (2019)

Inbound Tourism	2018	2019	Share (%)	Change (%)
Air	4,096,870	4,403,995	66.6	+7.5 ↑
• Phnom Penh Int'l Airport (PNH)	1,923,773	2,071,907	31.3	+7.7 ↑
• Siem Reap Int'l Airport (REP)	1,939,550	1,665,365	25.2	-14.1 ↓
• Kong Keng (KOS)	233,547	666,723	10.1	+185.5 ↑
Land	1,960,011	2,049,748	31.0	+4.6 ↑
Waterways	144,196	156,849	2.4	+8.8 ↑
Total	6,201,077	6,610,592	100.0	+6.6 ↑

Outbound Tourism	2018	2019	Change (%)
Cambodian Outbound Tourists	1,995,499	2,038,284	+2.1 ↑
International Tourists Departure	5,659,839	6,222,834	+9.9 ↑

Internal Tourism	2018	2019	Share (%)	Change (%)
Phnom Penh & Surroundings	3,610,262	4,404,895	55.8	+22.0 ↑
Siem Reap Angkor	2,590,815	2,205,697	27.9	-14.9 ↓
Coastal Areas	877,236	1,204,374	15.3	+37.3 ↑
Eco-tourism Areas	75,096	81,588	1.0	+8.6 ↑
Total	7,153,409	7,896,554	100.0	+10.4 ↑

Top Ten Tourist Arrivals by Area	2018	2019	Share (%)	Change (%)
Asia and the Pacific	4,995,633	5,442,942	82.3	+9.0 ↑
Europe	818,661	793,937	12.0	-3.0 ↓
Americas	369,319	353,963	5.4	-4.2 ↓
Africa	12,435	13,646	0.2	9.7 ↓
Middle East	5,029	6,104	0.1	+21.4 ↑
Total	6,201,077	6,610,592	100.0	+6.6 ↑

Top Ten Tourist Arrivals to Cambodia (2019)

Country	2018	2019	Share (%)	Change (%)
China	2,024,443	2,361,849	35.7	16.7 ↑
Viet Nam	800,128	908,803	13.7	13.6 ↑
Thailand	382,317	466,493	7.1	22.0 ↑
Laos	426,180	363,951	5.5	-14.6 ↓
ROK	301,770	254,874	3.9	-15.5 ↓
U.S.A	250,813	248,863	3.8	-0.8 ↓
Japan	210,471	207,636	3.1	-1.3 ↓
Malaysia	201,116	203,008	3.1	0.9 ↑
France	170,844	164,117	2.5	-3.9 ↓
U.K	162,395	163,177	2.5	0.5 ↑

4 Tourism Strategic Plans

The Royal Government has decided to launch 4 Tourism Strategic Plans for the purpose of saving tourists in two cultural and cultural tourism destinations.

1 Diversification of tourism products

2 Extended stay of tourists

3 Create challenges

4 Establishing and creating a new identity of Siem Reap

Macroeconomics (2018-2022)

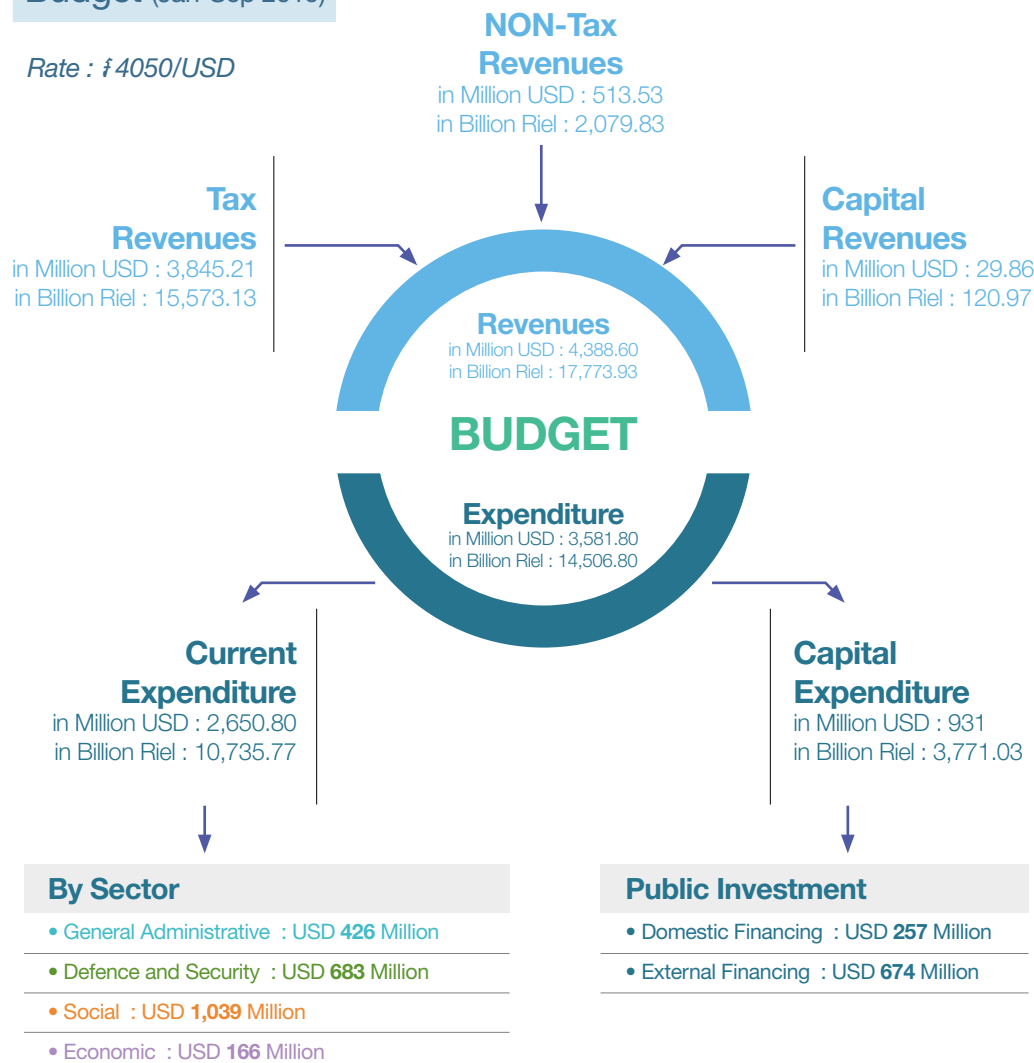
Economic Indicators	2018 Implemented	2019 Projected	2020 Projected	2021 Projected	2022 Projected
GDP Growth(%)	7.5	7.1	6.5	7.0	7.0
Inflation Rate	2.5	2.8	2.9	3.0	3.0
Export (% of GDP)	53.5	54.8	53.2	53.0	52.8
Import (% of GDP)	76.3	76.7	75.0	74.5	73.9
Private Transfers (Million USD)	1,270	1,353	1,452	1,561	1,678
FDI (% of GDP)	12.8	13.7	14.7	15.9	17.0
Exchange Rate (USD/Riel)	4,053	4,054	4,050	4,050	4,050
International Reserve (Million USD)	10,052	11,505	13,007	14,484	15,973

Budget Framework (2020-2022)

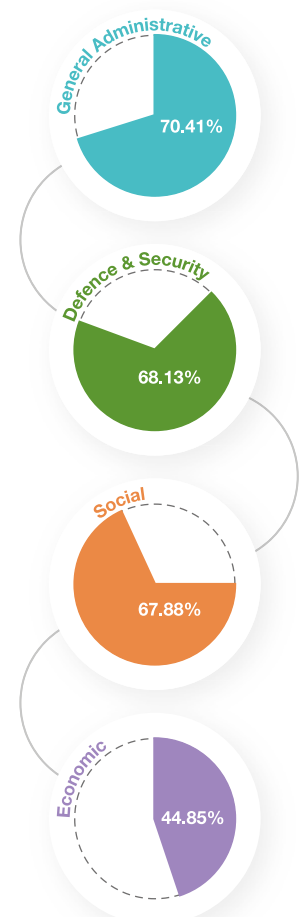
Budget Indicators (% of GDP)	2019 Budget Law	2020 Framework	2021 Framework	2022 Framework
Revenues	19.51%	22.52%	22.53%	22.55%
• Current Revenues	19.33%	22.36%	22.36%	22.39%
Expenditure	25.02%	28.40%	27.61%	27.40%
• Current Expenditure	16.49%	16.75%	17.04%	17.37%
Current Surplus	2.84%	5.61%	5.32%	5.02%
Total of Deficit	-5.51%	-5.88%	-5.08%	-4.85%

Budget (Jan-Sep 2019)

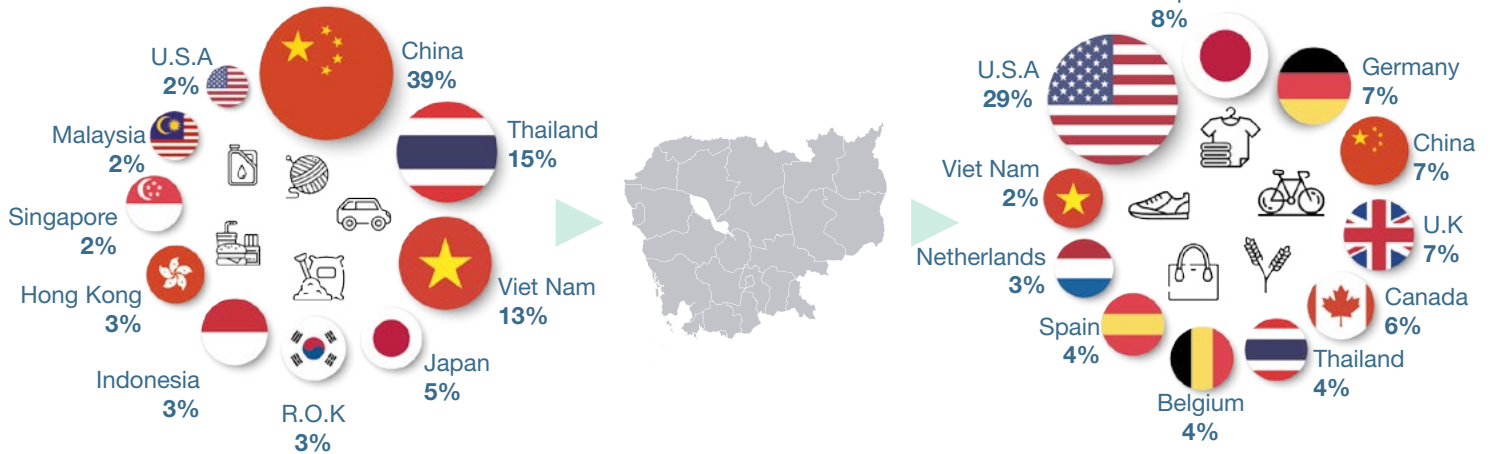
Rate : $\text{ₛ}4050/\text{USD}$



Implementation of Current Expenditure at nation-level by Sector (compare to budget law of 2019)



INTERNATIONAL TRADE (Jan-Sep 2019)



Trade Volume (2018-2022)

Year	Exports	Imports	Trade Volume
2018	53.5%	76.3%	130.3%
2019 (Projected)	54.8%	2.8	131.6%
2020 (Projected)	53.2%	76.7%	128.2%
2021 (Projected)	53.0%	74.5%	127.5%
2022 (Projected)	52.8%	73.9%	126.7%

Trade Registration Statistic

Trade Registration Request	11 months of 2017	11 months of 2018	Growth (%)
Capital Company	4,812	11,188	132.5
Int'l. Trade Company	87	142	63.22
Individual Enterprise	1,209	3,222	166.5
Co-Ownership Company	1	0	-100
Total	6,108	14,552	138.21

Domestic & International Trade Services

• Certificate of Origin (C/O)

An official document used to certify the products originated, wholly obtained, produced or manufactured in a country. It is generally an integral part of import documents required by the imported countries.

• Company Registration

Business Registration and the resulting business registries perform a crucial role in a market economy, provided they contain legally valid, reliable and up-to-date information on businesses and function in an efficient manner. In Cambodia, the business registration system has already made significant progress in streamlining and simplifying.

• Trade Mark Registration

Imports (S1 2019)

Country	Import		(Million USD)
	S1 2019	Change	
China	3,601.3	+37.8%	
Thailand	1,753.8	+20.3%	
Viet Nam	1,448.5	+27.9%	
Hong Kong	576.0	+0.8%	
Indonesia	470.8	+107.6%	
Taiwan	420.5	+8.4%	
Singapore	420.4	+14.4%	
EU	399.3	+7.6%	
R.O.K	339.3	+37.6%	
U.S.A	323.8	+37.0%	
Others	804.7	+41.0%	
Total	10,558.6	29.0%	

Exports (S1 2019)

Country	Export	
	S1 2019	Change
China	516.0	+36.2%
Thailand	242.3	+55.9%
Viet Nam	170.0	-2.1%
Hong Kong	131.6	-11.3%
Indonesia	12.9	+48.4%
Taiwan	29.3	+21.0%
Singapore	133.0	+171.2%
EU	1,936.4	+8.7%
R.O.K	113.2	+10.6%
U.S.A	2,021.1	+48.6%
Others	1,894.4	+11.4%
Total	7,200.2	22.4%

Intangible Culture Heritages



Apsara Dance

Apsara Dance “the Royal Ballet of Cambodia”, a masterpiece of Oral and Intangible Heritage of Humanity, Date of proclamation: November 07, 2003.



Lkhoan Sbek Thom

Lkhoan Sbek Thom “Khmer Shadow Theater” a masterpiece of Oral and Intangible Heritage of Humanity, Date of proclamation: November 25, 2005.



Lakhon Khol

Lakhon Khol - The Humanity’s Intangible Cultural heritage, Date of proclamation: November 28, 2018.



Tugging Rituals and Games

Teanh Prot “Tugging Rituals and Games” –The Humanity’s Intangible Cultural Heritage, Date of proclamation: December 02, 2015.

Tangible Culture Heritages & World Wonders



Angkor Wat

Angkor Wat Temple-Heritage of Humanity and World Wonder, Date of proclamation: December 14 1992.



Preah Vihear Temple

Preah Vihear Temple-The sacred site of Preah Vihear Temple-The World Heritage, Date of proclamation: July 07 ,2008.



Sambor Prei Kuk Temple

Sambor Prei Kuk Temple-The World Cultural Heritage, Date of proclamation: July 08, 2017.



The Long-Necked Khmer Lute

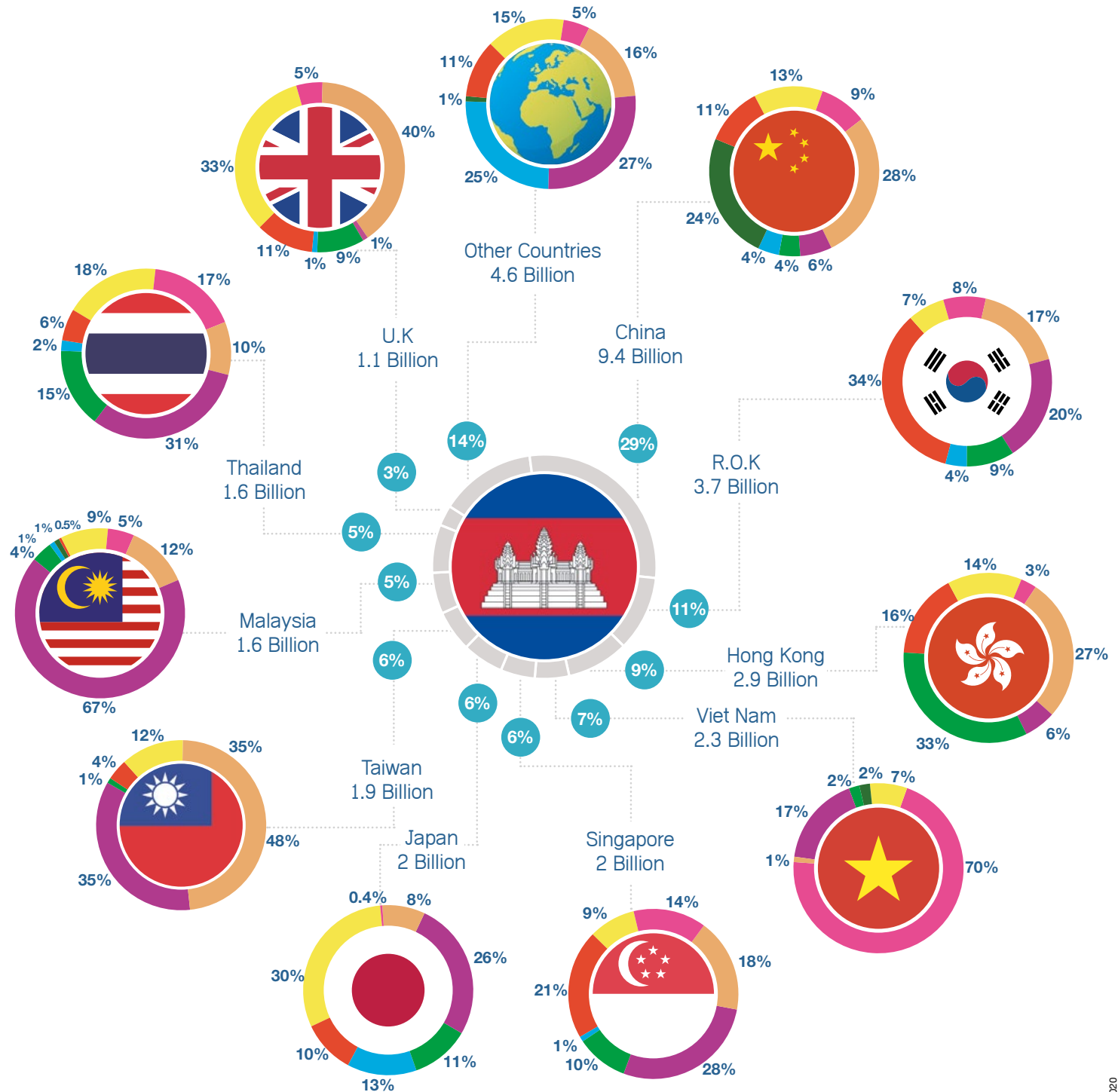
Chapei Dang Veng “The Long-Necked Khmer Lute” - The Humanity’s Intangible Cultural Heritage, Date of proclamation: November 30, 2016.

Foreign Direct Investment

Data as of Q3 2019 • All value is in USD



Kingdom of Cambodia
Ministry of Foreign Affairs
and International Cooperation



- Agriculture
- Manufacturing
- Finance
- Hotel & Restaurant
- Construction
- Electricity
- Real Estate
- Others

Total Foreign Direct Investment in Cambodia
amounted to **USD 33.1 Billion**, which flew mostly from **East Asia**:

1.China 29% 2.R.O.K 11% 3.Hong Kong 9% 4.Viet Nam 7%
5.Singapore 6% 6.Japan 6% 7.Taiwan 6% 8.Malaysia 5%
9.Thailand 5% 10.U.K 3% and 11.other countries 14%